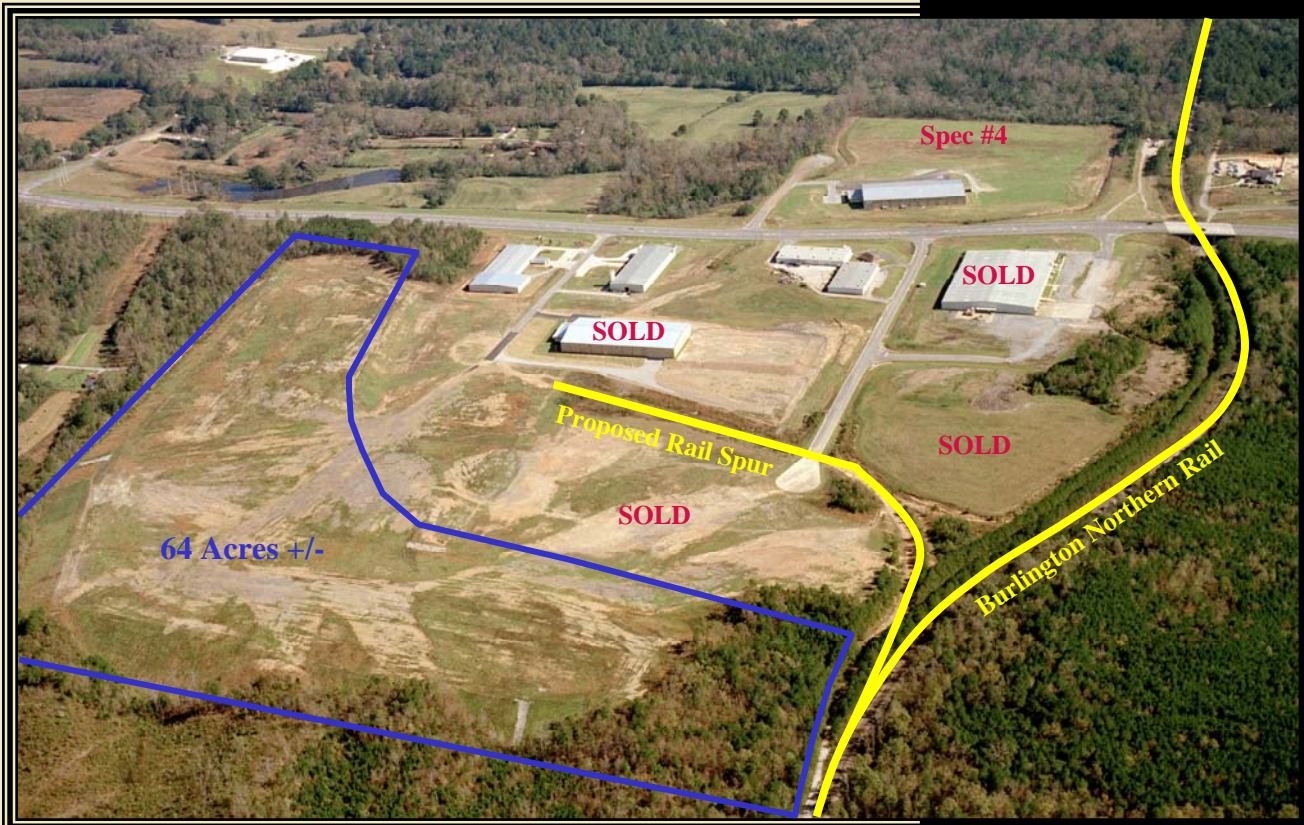


# Bevill Industrial Park

# Walker County



<b>Location:</b>	Jasper	<b>Electric:</b>	Alabama Power
<b>Total Park:</b>	500 acres	<b>Gas:</b>	Alabama Gas 8"
<b>Developed:</b>	126 acres	<b>Water:</b>	Jasper Water 12"
<b>Level:</b>	91 acres	<b>Sewer:</b>	Jasper Sewer 12"
<b>Remaining:</b>	64 Total 35 Useable	<b>Price:</b>	\$15,000/ac.
<b>Rail:</b>	BN Railroad		
<b>Zoning:</b>	Industrial		

## ALABAMA

**Contact:**

Walker County Development Authority

P.O. Box 1448 Jasper, Alabama 35502

Phone: 205-302-0068

Fax: 205-387-0980

Web Address: [wceida.com](http://wceida.com)